

WULGURU

March 2014 · Edition 6

2014 Expo's

Find out where to see Wulguru Group displays

Welcome from our General Manager

We are excited about the year ahead

UP

70M HIGH BOILER STACK

Meatworks

Projects from Townsville in the north to Casino in the south

200,000 Man Hours

200,000 + man hours of site based works over the past year

Tvl City Council
Water Tank
See more inside





Welcome

New look newsletter and an exciting year ahead.

The last 6 months was dismissed quicker than the English batting line up and the next 6 months is lining up to be more of the same (*insert South African cricketing analogy here*).

I am often asked the secret behind the strength and success of the Wulguru Group. The answer is a quick and easy one, 'our people'. The quality and integrity of people have shaped and defined our business. This includes people who are part of our business, suppliers, sub-contractors, professional advisors and our valued clients.

At Wulguru we take pride in maintaining a high standard and only partnering with like-minded people. We demand high standards from our staff, not only in the quality of work, but also their manner and integrity when dealing with all stakeholders. Similarly, we deal only with sub-contractors, suppliers, consultants and clients who can work within these same high standards.

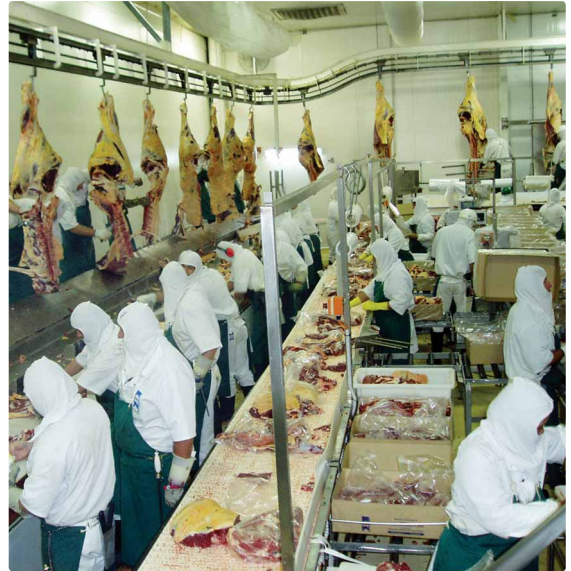
Adopting these philosophies doesn't stop differences of opinions and robust discussions are often held. When these discussions or differences of opinions occur they are dealt with in a professional and respectful manner. Dealing with people who retain these values inevitably means achieving a quality outcome to the satisfaction of all parties.

In my opinion, this simple belief is the strongest single asset of the Wulguru Group and the secret behind our success over the years.

Wayne Landrigan
General Manager



Food Processing



Meatworks Upgrades

The Wulguru Group recently undertook works in Townsville and Casino.

Over the past 6 months the Wulguru Group has undertaken projects in meatworks in Townsville, Mackay, Rockhampton, Kilcoy and Casino. The foundation and background to the Group has been built on Wulguru Steel's experience in designing and maintaining abattoirs. The works undertaken recently range from designing, fabricating and installing conveyors (screw, slat and bucket) to entire product room and kill floor upgrades. We have recently completed initial concept designs for companies seeking to develop specialist production facilities in remote locations within Australia and Internationally.



We can advise on plant and process layout, construction, operational management.



Specialised food processing products and solutions

Skilled Team

Staff have a range of inductions and tickets (General Mine Inductions, Working at Heights, Confined Space, machinery, etc).

Labour Hire

Tank Fabrication

Wulguru Group have recently completed a major project for the Townsville City Council including fabrication, construction and commissioning of a 42ML water reservoir.



200,000 + Man Hours

Our experienced team offers a comprehensive 'on site' service backed up by our workshop facilities.

We have mentioned in past newsletters the labour and site based works undertaken on a wide range of sites throughout Australia. In the past 12 months the Wulguru Group have completed

”
We supply highly trained and competent staff.

over 200,000 man hours of site based works. These works have been conducted in industries such as mining and mineral processing, government infrastructure, meat processing, sugar processing and general construction. We take great pride that all works were

completed in a professional manner and without an LTI.

Wulguru Steel prides itself on the quality, safety consciousness, resourcefulness and professionalism of our crews who have been deployed to some very challenging sites. The secret to our success is the ability to rely on skilled and proven staff from three workshops backed by the rigorous scanning and background checks conducted on new employees. We ensure that all staff are supported with the equipment needed to successfully undertake relevant tasks and any contingency that may arise.

Contact our Site Manager, Rob Ravizza, if you need skilled staff for your next project.



**2014
Expo's**

NQ Industry & Resources
Expo (Townsville)
27 - 28 March 2014

Australian Sugar
Conference (Gold Coast)
29 April - 1 May 2014

Mount Isa Mining Expo
(Mount Isa)
7 - 9 May 2014

Sugar Processing

Central Location

Our main workshop is centrally located in the country's largest sugar producing regions (Burdekin & Herbert).



Weld Techniques

Developing weld techniques and procedures to best work with LDX stainless steel material was initially challenging, we are now producing excellent results.

Going Up

Wulguru Group is constructing a 70m high boiler stack for the Macknade Sugar Mill.



PROGRESS Wulguru Steel flagged that it was proud to be selected as the successful tenderer for the Macknade Sugar Mill Boiler Stack upgrade. We are pleased to report that demolition of the concrete stack is now complete. These demolition works were undertaken by Townsville based company, J&D Rigging. Despite some challenging conditions including torrential rain and a cyclone, the demolition of the 70m high concrete stack was completed within the project timeline and without any safety incidents.

Wulguru Steel made the decision to fabricate and weld sections of the stack within our Townsville workshop and then transport these sections to the site for erection. We have maintained complete quality control and a high level of quality safety through undertaking works in a controlled environment. Time spent on site for the construction process is minimised ensuring completion of the works before the mill start up in June. Wulguru Steel utilised newly purchased

welding rotators and manipulators on these sections to produce superior weld quality and faster turnarounds compared to manual welding.

Developing weld techniques and procedures to best work with the LDX stainless steel material was initially challenging, however we are now producing excellent results. The new stack is presently constructed to approximately 30 metres. The project is currently on track to be completed by the end of May, ready for the start of the crushing season.



↑ Sections are fabricated in our workshop then transported to the site for erection.